



ZEPPELIN®

Zeppelin History in Asia

- 1988 First Silo installation for (3 x 500 m³) in Thailand for HMC
- 1994 Start to build up representative network
- 1996 First system installation for TPI in Thailand (30 t/h PP conveying dense phase)
- 1997 Zeppelin Technology Far East Pte. Ltd.
- 1998 Zeppelin Systems India Pvt. Ltd.
- 2003 Zeppelin Solids Technology China
- 2004 Integration of Motan Materials Handling
- 2005 Integration of mht (former Mann & Hummel affiliate)
Planning for the Asia expansion strategy
- 2006 Zeppelin Plastech Asia – Singapore
- 2007 Planning for Zeppelin Japan



Singapore Office Organisation Chart

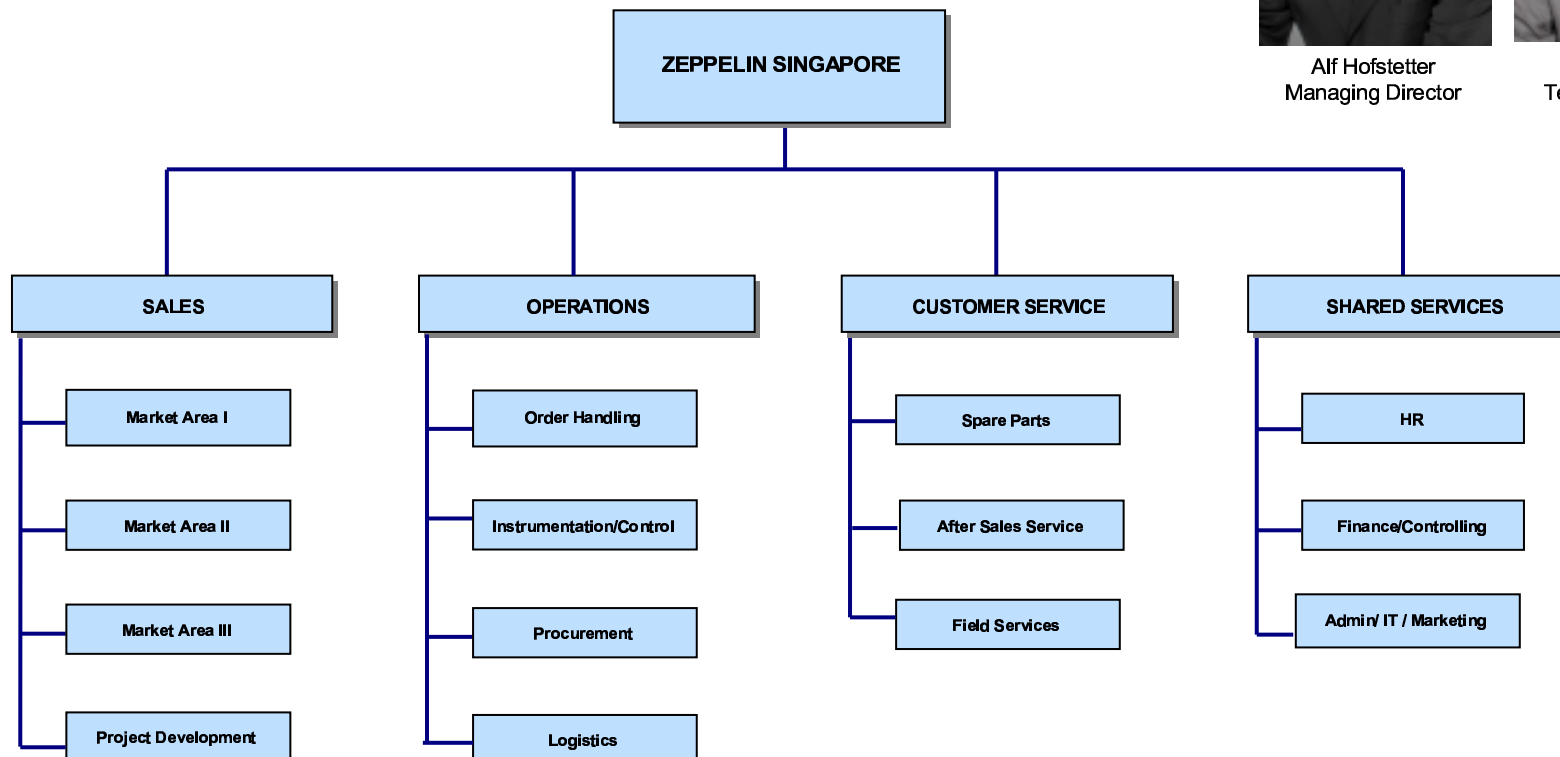
Singapore Management



Alf Hofstetter
Managing Director



R. Kalimuthu
Technical Director





Sales Record in Asia

- > 300 Installed Silos & Blenders
- > 50 Installed Polyolefin Systems
- > 25 Installed Plastic Processing System
- > 20 Installed Carbon Black / Rubber & Tyre Systems
- 4 x Complete plant supply including agitator, silos, blenders and conveying system for ABB Lumus Novolene Process for PP
- Silos, blending & conveying system for the world's 3rd Basell Spherizone process for PP - Korea

Major Customers:

BASF, Bayer, Chain Yarn, Chandra Asri, DIC, FPC, Gajah Tunggal, Goodway Rubber, Grand Siam, Hankook, Indorama, Kloeckner Pentaplast, KTN, Kumho, Lotte, Maspion, Multistrada, MES, Petlink, Polypacific, SECL, Shingkong, Sime Tyre, STC, Technip, Tetra Pak, Titan, TPC, TPE, TPP, Tripolyta, Wavin, Yanshan, Zig Zhen